

- + = functions/actions
- = functions for slightly modified version of page
- > = repeats for most

BASE PAGE



HOW TO



- + scroll right for overview / how to
- + click Explore (blue button) to browse as non member
- + Login button to log in page
- + Create new account button to create new account
- > buttons below page will redirect to respective links (ex. Legal, Jobs, Support, About, Team ++)

LOGIN



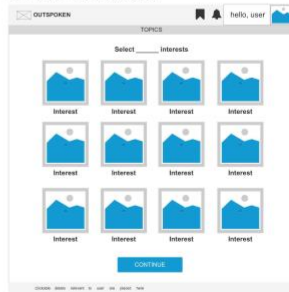
- + input username
- + input password
- + "remember me" option
- + Log in button to log in (Brings you to home page)

SIGN UP



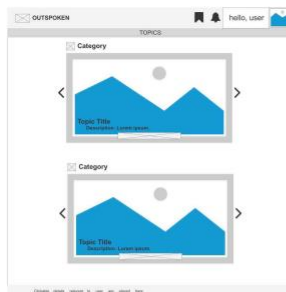
- + input name (fn, mn, ln)
- + agree to terms
- + subscribe to newsletter
- + Sign up with account (google, fb ++)
- + Sign up to SignUp+Login (will redirect to Select Interests)

SELECT INTERESTS

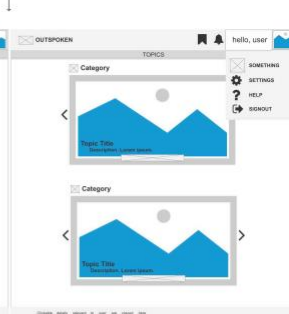


- + header changes (will include profile, notifis, and bookmarks icons)
- + Can click to select interest
- + Continue button (brings user to Homepage)
- + Display username and picture (top right)

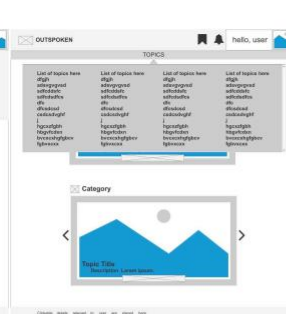
HOME



- + carousel of Trending and Tailored for you/interest-based (can be changed when logged in)
- + click on image/topic title brings user to debate page
- for non-members, upper right set of icons is not displayed (notifis and profile)
- Tailored for you is instead most viewed/most popular

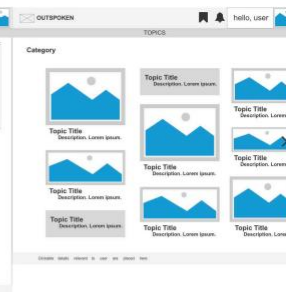


- + Profile dropdown
- + Can change settings or sign out
- + and more relevant stuff
- + bookmark and notifis
- for non-members, upper right set of icons is not displayed (notifis and profile)



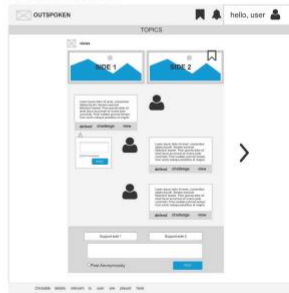
- + Can click Topics to view
- + Selecting specific topic brings user to Topic Selected page
- for non-members, upper right set of icons is not displayed (notifis and profile)
- Topics can still be viewed

TOPIC SELECTED



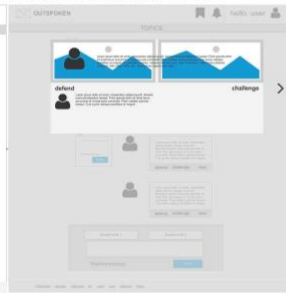
- + Category displayed based on category selected
- + Can arrange by most viewed, most relevant etc.
- + Continuous scroll right (to see more)
- + Click image or topic title redirects to Debate Page
- + Clic logo on top left redirects to Home Page
- for non-members, upper right set of icons is not displayed (notifis and profile)
- most relevant option is not given

DEBATE PAGE



- + Category displayed based on category selected
- + Can click bookmark to bookmark debate
- + Can arrange by most viewed, most relevant etc.
- + Hover on arrow right will display small text (title of next topic) (Next topic will be based on list/carousel you came from)
- + Clicking view all or speech bubble/box will maximise it and will display support and challenge responses (see Debate comment pop-up)
- + Hover over/ click support/challenge links will open small text box (Type comment there)
- + Two buttons below: click one to pick side you support
- + Post
- + Option to post anonymously
- + Click logo on top left redirects to Home Page
- for non-members, upper right set of icons is not displayed (notifis and profile)
- most relevant option is not given
- comment functions disabled

DEBATE COMMENT POP-UP



- + Black overlay on debate page (focus on Pop-up)
- + arrow right to next comment
- + View commenters and their profile images
- + click on background (the black overlayed one) to go back to debate page, where you left off
- + See comment and reactions
- for non-members, upper right set of icons is not displayed (notifis and profile)
- most relevant option is not given
- comment functions disabled
- (+ defend/support options to be finalized) either 1. pop up on debate page or 2. cannot defend or support in debate page, a.k.a. user must open comment (popup) to support/defend there
- (defend/support is a reply, not a vote)